



BACK TO THE BASIC

Simply Modern Design & Reliable Quality



HOSHIZAKI
Refrigerator & Freezer

A-FIT
SERIES



Hoshizaki aims to develop refrigeration products matching the needs of commercial kitchens in the world.
A-FIT series are the best refrigeration and freezing solutions for you.

The efficient cooling technologies that Hoshizaki

cultivated for many years.

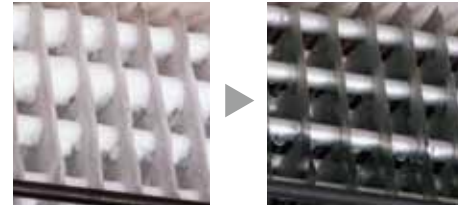
Simply Modern Design & Reliable Quality
HOSHIZAKI Refrigerator



Durable evaporator with special coating



Perfect defrost for efficient cooling



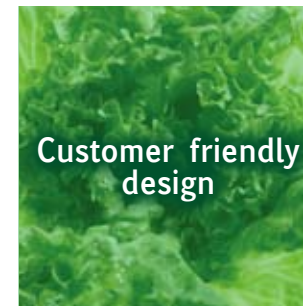
Rounded corners



Cleanable and replaceable door gaskets



Reach-in Type
HRE-127MA-SHD



Full-height handle



Automatic closing doors



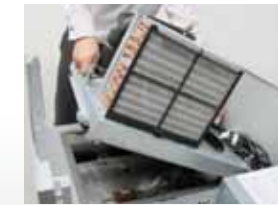
Convenient access valve



Advanced electric controller with digital display



Removable refrigeration unit (upright only)

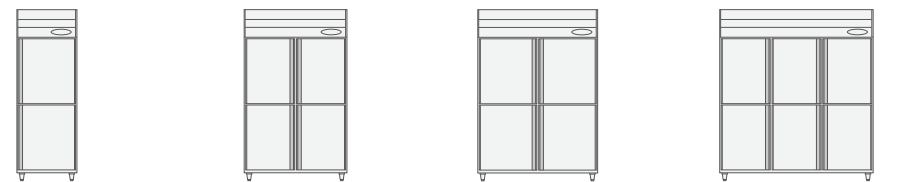


Undercounter Type
RTC-120MDA

Specifications

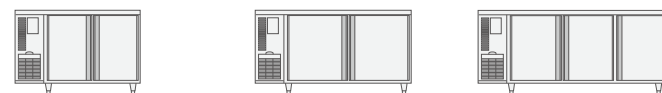


TEMPERATURE CONTROL : 0°C~12°C



Reach-in Type	HRE-77MA-SHD	HRE-127MA-SHD	HRE-147MA-SHD	HRE-187MA-SHD
POWER SUPPLY	1Phase 220-240V 50Hz	1Phase 220-240V 50Hz	1Phase 220-240V 50Hz	1Phase 220-240V 50Hz
HEAT REJECTION	410W	560W	610W	790W
STORAGE CAPACITY	600L	1110L	1310L	1720L
EXTERNAL DIMENSIONS	W700-D800-H1990mm	W1200-D800-H1990mm	W1400-D800-H1990mm	W1800-D800-H1990mm
NET WEIGHT	111kg	130kg	152kg	203kg

●OPERATION CONDITIONS : Ambient Temperature 5°C~43°C Voltage Range: Rated Voltage ±6%



Undercounter Type Depth 750mm

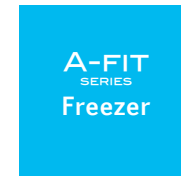
	RTC-120MDA	RTC-150MDA	RTC-180MDA
POWER SUPPLY	1Phase 220-240V 50Hz	1Phase 220-240V 50Hz	1Phase 220-240V 50Hz
HEAT REJECTION	350W	360W	380W
STORAGE CAPACITY	307L	420L	530L
EXTERNAL DIMENSIONS	W1200-D750-H800mm	W1500-D750-H800mm	W1800-D750-H800mm
NET WEIGHT	73kg	87kg	101kg

Undercounter Type Depth 600mm

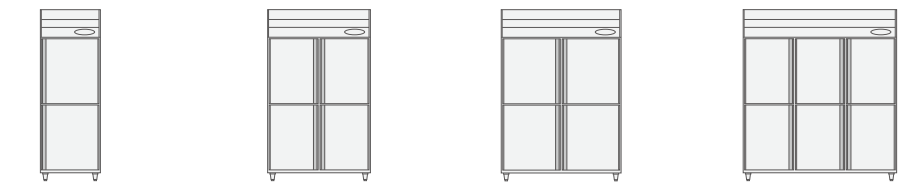
	RTC-120MNA	RTC-150MNA	RTC-180MNA
POWER SUPPLY	1Phase 220-240V 50Hz	1Phase 220-240V 50Hz	1Phase 220-240V 50Hz
HEAT REJECTION	350W	360W	380W
STORAGE CAPACITY	350L	318L	401L
EXTERNAL DIMENSIONS	W1200-D600-H800mm	W1500-D600-H800mm	W1800-D600-H800mm
NET WEIGHT	67kg	80kg	93kg

●OPERATION CONDITIONS : Ambient Temperature 5°C~38°C Voltage Range: Rated Voltage ±6%

Specifications

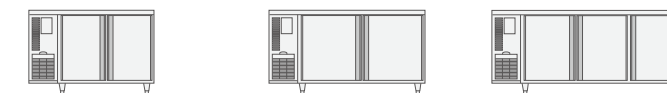


TEMPERATURE CONTROL : -23°C~-7°C



Reach-in Type	HFE-77MA-SHD	HFE-127MA-SHD	HFE-147MA-SHD	HFE-187MA-SHD
POWER SUPPLY	1Phase 220-240V 50Hz	1Phase 220-240V 50Hz	1Phase 220-240V 50Hz	1Phase 220-240V 50Hz
HEAT REJECTION	670W	1030W	1150W	1210W
STORAGE CAPACITY	600L	1100L	1300L	1710L
EXTERNAL DIMENSIONS	W700-D800-H1990mm	W1200-D800-H1990mm	W1400-D800-H1990mm	W1800-D800-H1990mm
NET WEIGHT	111kg	140kg	152kg	213kg

●OPERATION CONDITIONS : Ambient Temperature 5°C~43°C Voltage Range: Rated Voltage ±6%



Undercounter Type Depth 750mm

	FTC-120MDA	FTC-150MDA	FTC-180MDA
POWER SUPPLY	1Phase 220V 50Hz	1Phase 220V 50Hz	1Phase 220V 50Hz
HEAT REJECTION	670W	710W	710W
STORAGE CAPACITY	307L	420L	530L
EXTERNAL DIMENSIONS	W1200-D750-H800mm	W1500-D750-H800mm	W1800-D750-H800
NET WEIGHT	78kg	93kg	107kg

Undercounter Type Depth 600mm

	FTC-120MNA	FTC-150MNA	FTC-180MNA
POWER SUPPLY	1Phase 220V 50Hz	1Phase 220V 50Hz	1Phase 220V 50Hz
HEAT REJECTION	670W	670W	710W
STORAGE CAPACITY	231L	318L	401L
EXTERNAL DIMENSIONS	W1200-D600-H800mm	W1500-D600-H800	W1800-D600-H800
NET WEIGHT	72kg	86kg	99kg

●OPERATION CONDITIONS : Ambient Temperature 5°C~38°C Voltage Range: Rated Voltage ±6%



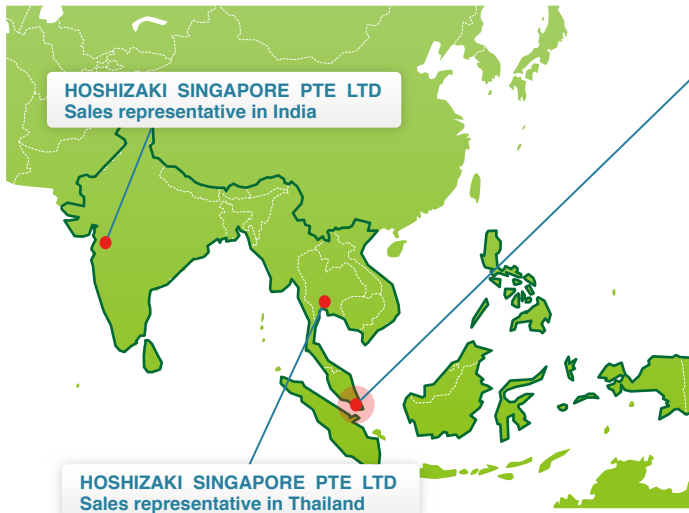
HOSHIZAKI



1 year parts and labour warranty

Warranty valid in serviceable area by Hoshizaki qualified service company only.

South east & South Asia.



HOSHIZAKI SINGAPORE PTE LTD

18 Boon Lay Way,
#07-142 Tradehub 21,
Singapore 609966
Tel:+65 - 6225 - 2612 Fax: +65 - 6225 - 3219
Email: sales@hoshizaki.com.sg
Web site: www.hoshizaki.com.sg

HOSHIZAKI

